

Caro Series Home Wallbox

Caro Series Home Wallbox, a 2023 Red Dot Award winner, adds elegance to any charging location, be it at home, in business settings, or semi-public areas. Solar power-compatible for eco-friendly charging, its intelligent load management system reduces grid peak pressures. Experience powerful load balancing with up to 20 chargers on a single circuit. Enjoy the flexibility of 1A grid charging, optimizing energy usage with seamless PV integration.

EU & UK Standard



Versatile

- Type 2 cable/socket
- Wall-mount/Pole-mount installation
- Three enclosure colors
- Activated by NFC

Intelligent

- Communications: Wi-Fi+4G+Bluetooth/Wi-Fi+Ethernet+Bluetooth
- App charging scheduling
- Dynamic load balancing with LBC

PV Compatible

- 0 emission PV charging
- Seamless integration with PV systems
- Adjustable current for optimized PV usage

Safe & Convenient

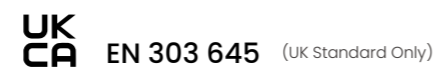
- 30mA Type A + 6mA DC
- Relay-sticking protection



Pearl White

Space Black

Emerald Green



Caro Series Home Wallbox

Datasheet	Model	AC7000-AE-35 AC7000-AB-45C	AC7000-BE-35	ACO11K-AE-35	ACO11K-BE-35
Electrical Specification	Power Supply	IP+N+PE		3P+N+PE	
	Rated Voltage	230V AC		400V AC	
	Rated Current	32A		16A	
	Frequency	50/60Hz			
	Rated Power	7kW		11kW	
Basic Attributes	Product Standard	AE: EU / AB: UK	EU	EU	EU
	Charge Connector	Type 2 Cable	Type 2 Socket	Type 2 Cable	Type 2 Socket
	Cable Length	7m Cable	/	7m Cable	/
	Enclosure	PC			
	Installation	Wall-mount/Pole-mount (Optional)			
Interactive Interface	LED Indicator	Green/Yellow/Red			
	RFID Reader	Mifare ISO/IEC 14443 A			
	Start Mode	Plug to Charge/RFID Card/App			
Communication	Wi-Fi & Bluetooth & Ethernet	Standard			
	Wi-Fi & Bluetooth & 4G	Optional			
	OCPP	OCPP 1.6 Json			
Safety	RCD	30mA Type A + 6mA DC			
	Ingress Protection	IP65	IP54	IP65	IP54
	Impact Protection	IK08			
	Electrical Protection	Over current protection, Residual current protection Surge protection, Over/Under voltage protection, Over/Under frequency protection, Over temperature protection			
	Certification	AE: CE/CB/RoHS AB: UKCA/ EN 303645	CE/CB/RoHS		
	Certification Standard	IEC 61851-1:2019 EN IEC 61851-1:2019 EN IEC 61851-21-2:2021 EN IEC 61000-6-1:2019 EN IEC 61000-6-3:2007+A1 EN 300 328 V2.2.2:2019 EN 300 330 V2.1.1:2017 EN 301 489-1 V2.2.3:2019 EN 301 489-3 V2.1.1:2019 EN 301 489-17 V3.2.0:2017 EN 62311:2020 BS 7671:2018+A2:2022			
	Warranty	2 Years			
Working Environment	Operation Temperature	-30°C -+50°C			
	Work Humidity	5%-95%			
	Work Altitude	≤2000m			
Package	Product Dimension	344*192*100mm (H*W*D) Cable 344*192*135mm (H*W*D) Socket			
	Package Dimension	430*330*235mm (L*W*H) Cable 430*245*210mm (L*W*H) Socket			
	Net Weight	3.8kg	1.8kg	3.9kg	2.0kg
	Gross Weight	5.2kg	2.5kg	5.6kg	2.7kg
	External Package	Carton			